



English version

# The Danish **PEFC Certification Scheme** for sustainable forest management

The 4<sup>th</sup> revision  
March 2007, with amendments October 2007 and November  
2007

## Contents:

<b>1. INTRODUCTION.....</b>	<b>1</b>
<b>2. SCOPE .....</b>	<b>1</b>
<b>3. REFERENCES.....</b>	<b>1</b>
<b>4. DEFINITIONS .....</b>	<b>2</b>
<b>5. DANISH FORESTRY – FACTS, INSTITUTIONAL FRAMEWORK AND LEGISLATION.....</b>	<b>2</b>
5.1 STRUCTURE OF THE DANISH FOREST PROPERTIES .....	2
5.2 THE LEGAL BASIS FOR FORESTRY IN DENMARK .....	3
5.3 THE INSTITUTIONAL FRAMEWORK FOR FORESTRY IN DENMARK.....	3
<b>6 STRUCTURE OF THE DOCUMENTS .....</b>	<b>4</b>
<b>7. THE DANISH SCHEME - ORGANISATION.....</b>	<b>5</b>
7.1 PEFC DENMARK .....	5
7.2 ACCREDITATION AND CERTIFICATION BODY .....	6
7.3 UMBRELLA ORGANIZATIONS AND MULTISITES .....	6
7.4 DISTRIBUTION OF AUTHORITY BETWEEN THE DIFFERENT ORGANIZATIONS.....	6
<b>8. CERTIFICATION LEVELS .....</b>	<b>7</b>
8.1 CERTIFICATION OF FOREST MANAGEMENT .....	7
8.2 CERTIFICATION OF UMBRELLA ORGANISATIONS .....	7
8.3 CHAIN OF CUSTODY CERTIFICATION OF WOOD INDUSTRIES.....	7
<b>9 USE OF THE PEFC LOGO.....</b>	<b>8</b>
<b>10. APPEALS, COMPLAINTS AND DISPUTES .....</b>	<b>8</b>
<b>11. IMPLEMENTATION OF CHANGES – TRANSITION PERIOD.....</b>	<b>8</b>

## 1. Introduction

The timber industry worldwide is being met with demands for documentation of sustainable forest management from certain customers on the international timber market. Many retailers and other purchasers of wood products are starting to give priority to timber and wood products that can be verified as originating from sustainable managed forests. One-way of documenting sustainable forest management is certification in accordance with a publicly available standard.

These demands on the international timber market have led to several international initiatives aimed at developing criteria and indicators for sustainable forestry. National and regional differences in forestry and legislation all over the world have led to the development of national certification systems and standards.

The Programme for the Endorsement of Forest Certifications schemes - PEFC Council was founded in 1999. PEFC is a private sector initiative. The purpose of PEFC is to establish an internationally credible framework for forest certification systems promoting sustainable forestry. The system is custom-made to guarantee consumers the possibility of buying independently certified timber and wood products.

PEFC Denmark was founded in 1999 as well with the purpose of developing a Danish certification system for sustainable forest management and chain of custody.

This document describes the structure of the Danish PEFC certification system for sustainable forest management (in the following mentioned as "the Danish scheme")

## 2. Scope

The purpose of the Danish scheme is to document and promote sustainable management of the forests and to ensure the traceability of the certified timber through the entire product chain from the forest to the end-user.

PEFC Denmark is responsible for the development, administration and maintenance of the Danish scheme, including a total review of the scheme in the light of new scientific knowledge and practical experience at least every 5 years.

PEFC Council endorsed the first version of the Danish scheme on the 15<sup>th</sup> October 2002, with a small amendment from the 30. March 2005. PEFC Denmark's board of directors approved this document on the 14<sup>th</sup> March 2007, with amendments approved the 18<sup>th</sup> October 2007 and the 16<sup>th</sup> November 2007. This document is the result of the first 5 years review of the Danish scheme.

## 3. References

The Danish scheme is based on guidelines and requirements from PEFC Council as stated in the technical document and the enclosed annexes (PEFC Council Technical Document – [www.pefc.org](http://www.pefc.org)).

Certification of the forest management within the Danish scheme is based upon:

- the Lissabon Resolution (L2): Pan-European Criteria, Indicators and Operational Level Guidelines for Sustainable Forest Management including annex 1: Pan-European Criteria and Indicators for Sustainable Forest Management and annex 2: Pan-European Operational Level Guidelines for Sustainable Forest Management ([www.mcpfe.org](http://www.mcpfe.org))
- The Danish operational guidelines for sustainable forestry ([www.sns.dk](http://www.sns.dk))
- ILO core conventions as adopted by the International Labour Organisation ([www.ilo.org](http://www.ilo.org))

Chain of custody certification within the Danish scheme is based upon the international PEFC standard for Chain of Custody of Forest Based Products. Thus the same standard applies as within most of the other certification systems approved by the PEFC. Thereby the traceability of PEFC-certified timber and timber products is improved in connection with imports and exports.

## 4. Definitions

For the purposes of the Danish scheme, the relevant definitions given in “*List of words and definitions for the Danish PEFC certification scheme for sustainable forest management - PEFC DK 007-1*” apply.

## 5. Danish forestry – Facts, institutional framework and legislation

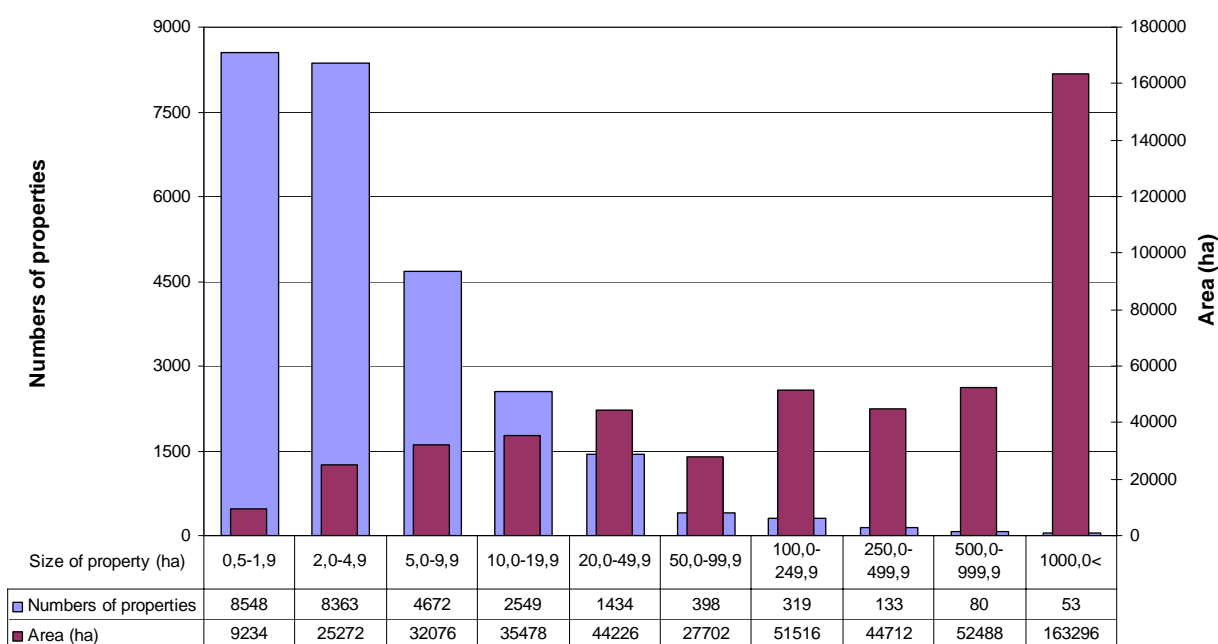
As an introduction to the elaboration of the Danish scheme, the forestry in Denmark is briefly described below.

### 5.1 STRUCTURE OF THE DANISH FOREST PROPERTIES

The Danish forest area comprises about 490.000 ha making up approximately 12 % of the land area. 46 % of the area is privately owned, 26 % is owned by foundations, co-operatives etc. And 28 % is state owned or owned by other public institutions.

The forest sector in Denmark differs somewhat from our neighbouring countries Sweden and Germany. Denmark has a very large number of small properties. Figure 5.1 illustrates the distribution of the forest area in relation to the number of properties and property size. From this it follows that properties less than 20 ha in size make up about 91 % of properties but only cover 20 % of the entire forest area.

**Distribution of the forest properties in Denmark (Danmarks Statistik 2000)**



**Figure 5.1:** Distribution of the forest area in relation to the number of properties and property size.

The majority of the small properties are in fact agricultural holdings in which forestry does not form an income its own right. However, the timber production from these minor forests plays an important role as owners join forces in jointly managed larger units thereby seeking to diminish the disadvantages of scale.

## 5.2 THE LEGAL BASIS FOR FORESTRY IN DENMARK

In general, in Denmark rather detailed rules and guidelines regulate the activities which any given forest owner is allowed to undertake on his/her forest property. For instance, 85% of the forest area is registered as forest reserve and cannot be converted to other land use without specific permission and establishment of compensation forest in an alternative location. The first major Danish forestry regulation was issued in 1805. The present Forest Act from 2004 has promotion of sustainable forest management as primary objective

The Forest Act defines which forests are considered forest reserves (meaning areas permanently set aside for forestry) and the requirements imposed on management of these forests. In some instances the Forest Act imposes requirements on non-forest reserves as well. The purpose of the forest act has to a large extent been based on the primary objective of preserving the forest resource and its production potential. It reflects the historical background, which was a severe degradation of the forest resource, which culminated in 1805. From 1989, an additional objective of the Act is to promote multiple-use of the forests, i.e. incorporation of nature protection, cultural heritage and recreational considerations. In the latest revision the demand for sustainability, which means inclusion of economic as well as ecological and social values, has been incorporated as an objective. The Act also established specific protection of oak thickets and particular nature types (bogs, lakes, etc.). The act describes public grant schemes for forest activities by which it is possible to get grants to promotion of sustainable forest management in existing forests.

The public's access to the natural environment, including forests, is secured through The Nature Protection Act. The Nature Protection Act lays down general conservation regulations for a number of different nature types above a certain size. These regulations are in force throughout the open land.

## 5.3 THE INSTITUTIONAL FRAMEWORK FOR FORESTRY IN DENMARK

In Denmark, the forest sector is under the jurisdiction of the Ministry of Environment. The responsibility has been delegated to the Danish Forest and Nature Agency (DFNA), which includes a central authority as well as 20 State forest districts. The DFNA manages the 24% of the forest area in Denmark, which is owned by the State. The State forest districts are responsible for supervision of the private forest districts, which is done at appropriate intervals – generally, at a maximum interval of 6-10 years. Furthermore, the State forest districts are responsible for administration of the grant schemes related to private forestry.

The Danish Forest and Nature Agency is responsible for implementation of national and international forest policy. In connection with the Rio Conference on biodiversity, the ensuing ministerial conferences on sustainable forest management (the Helsinki process) and the indicators and operational guidelines decided on in Lisbon, the Agency has drafted strategies for sustainable forest management, for conservation of natural forest and a comprehensive national forest programme defining the present national forest policy goals. The political initiatives are being actively implemented through legalisation and by economic incentives such as national grant schemes. There are several grant schemes related to forestry e.g. the grant schemes for afforestation, good and multiple-use forestry, forest management planning, key biotope registration, etc.

Private forest owners are well organised in various local and national associations. Danish Forest Association is the private forest owners trade organisation. Moreover more than 7.000 small forest owners organized in local forest management associations, which offers contracting and management services and represent the political interests of the private forest owners. In a similar way many forest owners cooperate with HedeDanmark. A wide range of NGOs is active in the national forest debate, for instance WWF Denmark, the Danish Society for the Conservation of Nature, the environmental organisation Nepenthes. Furthermore some other organisations like the Danish Outdoor Council, the Danish Hunters Society, and the Danish Ornithological Society has special interest in the Danish forest.

## 6 Structure of the documents

The Danish scheme is structured with a number of guidelines and normative documents, which defines the requirements for certification under the Danish scheme. The structure of the documents is illustrated in figure 6.1.

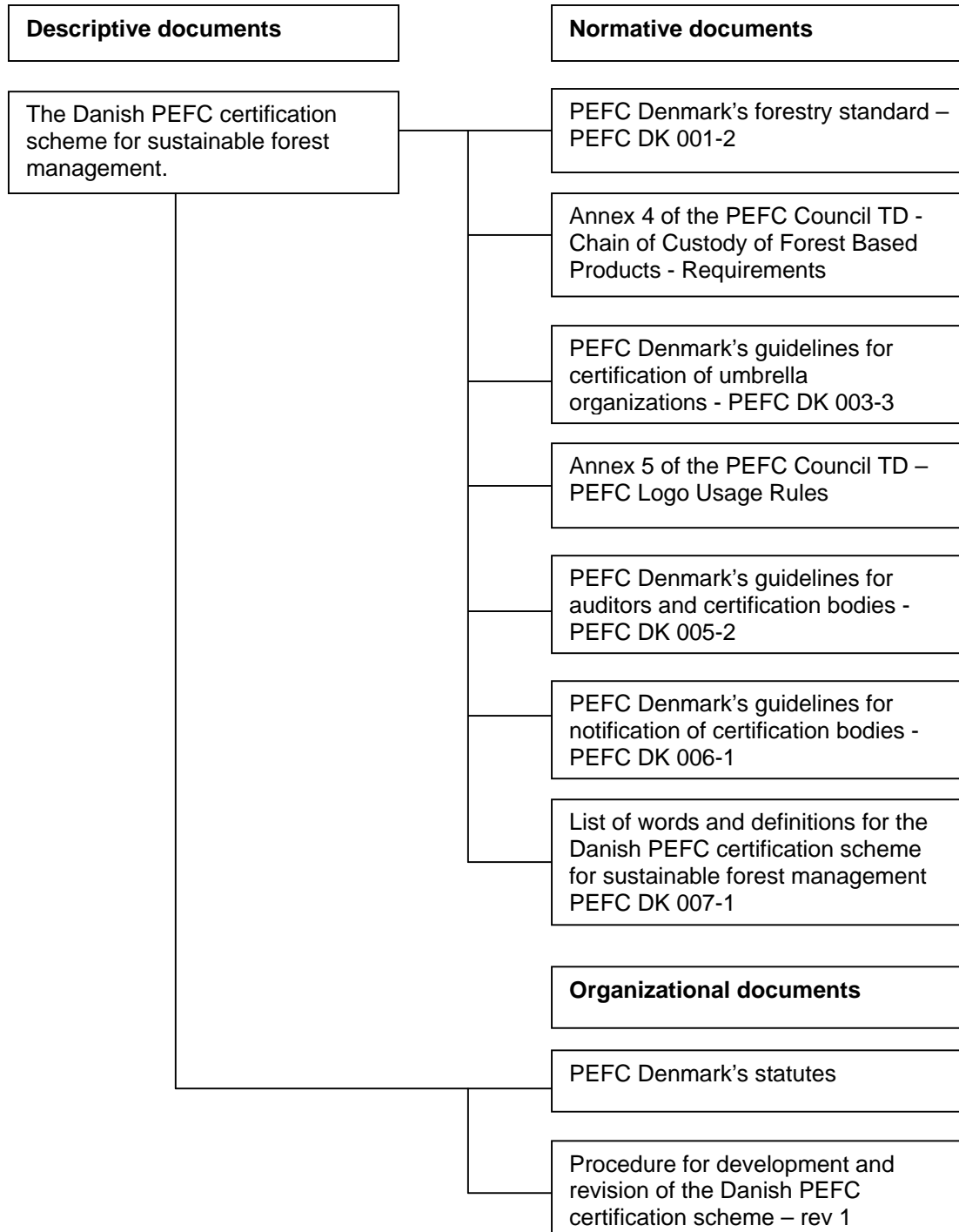
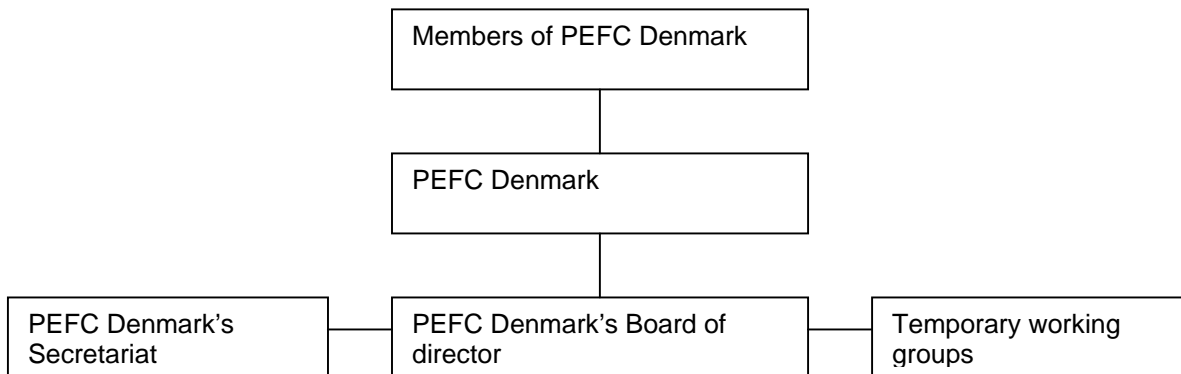


Figure 6.1 Structure of the Danish scheme

## 7. The Danish Scheme - Organisation

### 7.1 PEFC DENMARK

PEFC Denmark is a membership-based, self-governing and legally independent association, which owns and is responsible for the development, administration and maintenance of the Danish scheme. PEFC Denmark is organised with a board, a secretariat and an annual general assembly as illustrated in fig. 7.1. Temporary working groups can be settled if required for example in connection with review of the scheme.



**Figure 7.1: Organisation of PEFC Denmark**

#### The objectives for PEFC Denmark:

- to promote PEFC Denmark's forestry standard as the standard for certification of forestry in Denmark.
- to promote PEFC Councils international standard for chain of custody as the standard of chain of custody certification in Denmark.
- to ensure that the Danish system of PEFC certification for sustainable forestry is a credible, cost-effective and user-friendly system of certification that can be applied by the whole spectrum of forest owners and forest types as well as timber companies in Denmark.
- to meet the criteria and indicators for participation within an internationally recognised mutual recognition framework for forest certification.
- to continuously develop and improve the Danish scheme through response to new knowledge, including scientific research and changed demands.

#### The tasks for PEFC Denmark:

PEFC Denmark is operated by PEFC Denmark's secretariat in cooperation with PEFC Denmark's Board of directors.

PEFC Denmark has the following tasks:

- Developing and reviewing the scheme with a view to continuous improvement and changed demands
- Promoting the Danish scheme
- Maintaining a database with information on certified forests, wood industries and umbrella organizations
- PEFC notification of certification bodies
- Issuing PEFC logo licenses
- Maintaining contact with PEFC Council and communicating information
- Maintaining a register of accredited certification bodies in Denmark
- Maintaining PEFC Denmark's homepage – [www.pefc.dk](http://www.pefc.dk)
- Appointment of an appeal committee for dealing with disputes and complaints arising from forest management or chain of custody scheme implementation and interpretation that cannot be addressed in the dispute settlement procedures of the relevant certification or accreditation body.

## 7.2 ACCREDITATION AND CERTIFICATION BODY

### Accreditation body

PEFC is based on independent accreditation of certification organizations. Therefore it is an explicit requirement that all certification audits carried out under the Danish scheme must be carried out by third-party independent and PEFC notified certification bodies accredited by DANAK or other national European-based accreditation bodies which are members of the European Cooperation for Accreditation (EA) and/or the International Accreditation Forum (IAF) and have signed the agreement of mutual recognition.

### Certification body

Certification bodies are independent and approved third parties, who have gained PEFC notification and carries out PEFC certification in accordance with the rules laid down by PEFC Denmark. The certification body issues certificates to the applicant and controls the use of certificates.

Procedures and requirements for accreditation and PEFC notification of certification bodies to carry out certification on forest management, umbrella organisations and chain of custody is stated in *“PEFC Denmark’s guidelines for auditors and certification bodies - PEFC DK 005-2”* and *“PEFC Denmark’s guidelines for notification of certification bodies - PEFC DK 006-1”*

## 7.3 UMBRELLA ORGANIZATIONS AND MULTISITES

In this context an umbrella organization is an organization, which offers and administers group certification of forest management. Group certification implies issuing individual forest management evidence to forest owners, who have established a group of forest owners seeking certification under an umbrella organization.

The requirements for certification of umbrella organizations are stated in *“PEFC Denmark’s guidelines for certification of umbrella organizations PEFC DK 003-3”*.

Group certification for Chain of custody certification is carried out in accordance with the requirements in appendix 4 (Implementation of the chain of custody standard in multisite organisations) to *“Annex 4 of the PEFC Council TD - Chain of Custody of Forest Based Products – Requirements”*

## 7.4 DISTRIBUTION OF AUTHORITY BETWEEN THE DIFFERENT ORGANIZATIONS

The distribution of authority between the different organizations is summarised in figure 2.2

<u>Organization</u>	<u>Action</u>	<u>Target group</u>
PEFC Denmark	Owns, administer and maintain the scheme  PEFC Notifies	The Danish PEFC certification scheme for sustainable forest management  Certification bodies
National accreditation body	Accredit	Certification bodies to carry out certification under the Danish scheme.
Certification body	Certify	1. Major forest owners who wish individual certification. Issues forest management certificates. 2. Wood industries that wish individual certification. Issues Chain of Custody certificates. 3. Umbrella organizations and multisite organisations to administer group certification. Issues group certificates.
Umbrella organization / multisite organisations	Administer	Group certification of minor forest owners or industries. Issues forest management proofs /Chain of custody proofs.

**Figure 7.2: Distribution of authority between the different organizations**

## 8. Certification levels

It is possible to achieve the following levels of certification under the Danish PEFC certification scheme for sustainable forest management:

- a) Certification of forest management either through:
- Individual certification or
  - Group certification

Group certification is carried out through an umbrella organisation, which has been certified for that purpose.

The PEFC Council has made it possible to have regional certification. This option is not suitable for Danish conditions and is therefore not available in Denmark at the moment.

- b) Certification of chain of custody either through:
- Individual certification or
  - Group certification (multi site)

### 8.1 CERTIFICATION OF FOREST MANAGEMENT

#### Individual certification

Individual forest owners can seek certification for the forest they own. This level is accessible for any size and type of forest. However, an individually owned certificate may be particularly appropriate or the preferred option for larger management units.

Individual certification of forest management is carried out according to *“PEFC Denmark’s forestry standard PEFC DK 001-2”*. The forest management certificate is issued to the forest owner.

#### Group certification

The rationale for group certification is to spread the costs of certification across a number of owners, for whom the costs of being certified individually as small or medium-sized owners might otherwise have been disproportionate to the benefits. The premise for this potential cost reduction is that only a sample of the forest areas within the group needs to be audited each year by the certification body.

All the forest owners in a group shall individually fulfil the requirement in *“PEFC Denmark’s forestry standard PEFC DK 001-2”*

Administration, policies and forest management planning that are relevant for the whole group may be implemented by the umbrella organization to gain additional cost reductions.

### 8.2 CERTIFICATION OF UMBRELLA ORGANISATIONS

Umbrella organisations wishing to administer group certification of forest management shall apply for certification of their activities in this field.

Certification of umbrella organisations is carried out according to *“PEFC Denmark’s Guidelines for certification of umbrella organisations PEFC DK 003-2”* and for the forest participating in the group *“PEFC Denmark’s forestry standard PEFC DK 001-2”*. A group certificate is issued to the umbrella organisation.

### 8.3 CHAIN OF CUSTODY CERTIFICATION OF WOOD INDUSTRIES

#### Individual certification

Individual companies can seek chain of custody certification of their operation. This level is accessible for any size and type of companies.

Chain of custody certification is carried out according to “*Annex 4 of the PEFC Council TD - Chain of Custody of Forest Based Products – Requirements*”. The Chain of Custody certificate is issued to the owner of the company.

### **Group certification – multi sites**

The rationale for group certification is to spread the costs of certification across a number of companies for whom the costs of being certified individually as small or medium-sized companies might otherwise have been disproportionate to the benefits. The premise for this potential cost reduction is that only a sample of the multi sites within the group needs to be audited each year.

Multisite organisations wishing to carry out group certification of chain of custody apply for certification of their activities in this field. Certification of multisite organisations is carried out according to in appendix 4 (Implementation of the chain of custody standard in multisite organisations) to “*Annex 4 of the PEFC Council TD - Chain of Custody of Forest Based Products – Requirements*”. A group certificate is issued to the central office of the multisite organisation.

## **9 Use of the PEFC Logo**

Holders of certificates issued under the Danish scheme may use logos, marks or claims relating to the relevant certification body operating under the scheme, provided that such usage is carried out in strict accordance with the rules and procedures issued by the certification body.

All use of the PEFC logo, trademark and any associated claims made in connection with forest management certification and / or wood product chain of custody verification under the Danish scheme will be carried out in accordance with “*Annex 5 of the PEFC Council TD – PEFC Logo Usage*”. [www.pefc.org](http://www.pefc.org)

Usage will be licensed and controlled exclusively by PEFC Denmark on behalf of, and subject to a contractual agreement with, the PEFC Council.

## **10. Appeals, complaints and disputes**

Appeals, complaints and disputes relating to issuance and withdrawal of certificates shall be brought before and handled by the certification body's own procedures.

An appeal committee appointed by PEFC Denmark (“*Statutes of PEFC Denmark*”, §7) shall deal with other complaints and disputes arising from forest management or chain of custody scheme implementation and interpretation that cannot be addressed in the dispute settlement procedures of the relevant certification or accreditation body.

## **11. Implementation of changes – transition period**

Unless specified otherwise in the standards under the Danish scheme, the transition period for implementation of changes to standards under the Danish scheme are one year from the time the standard has been approved by PEFC Council.

New certificates issued after the 1<sup>st</sup> March 2008 shall be issued according to the revised standards.

For certificates issued before the end of the transition period the changes have to be implemented by the time of their next surveillance audit.